

INTRODUCING SWPBS!

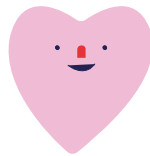
Introducing School Wide Positive Behaviour Support

This year, our school has begun the process of becoming an SWPBS school. This exciting research-backed initiative will have a big impact on the way that our school teaches positive behaviour over the coming months and years.



What is School Wide Positive Behaviour Support?

School Wide Positive Behaviour Support is a framework for teaching appropriate and positive behaviours, through modelling and reinforcing positive behaviour. The implementation of the framework requires a school community to commit to a set of principles which includes; establishing a common philosophy, an expected set of behaviours, procedures for teaching these behaviours, a continuum of procedures to discourage inappropriate behaviours and procedures for record-keeping and decision making.



What is currently happening?

At the moment, the SWPBS team is developing a range of tools to help implement including:

- A matrix of positively stated behaviour expectations for different settings around the school
- Updating our Student Wellbeing Policy to reflect the philosophy behind the framework
- Creating teaching materials ready to be rolled out in 2022 that will complement our existing IB PYP and Respectful Relationship programs .

Watch this space for more news about SWPBS in future!

